

Suteksan

Egypt



Certificates



General Information

01

PUMPED LIQUIDS

Clean.

Thin.

non-aggressive liquids without solid particles or fibers.

The max. sand content is 50 mg/lit.

02

INTERNATIONAL CERTIFICATES

All products meet international standards.

ISO 5199:2003

ISO 2858:2010

ISO 9906:2012

ISO 9001:2015

CE

SASO

03

CURVE CONDITIONS

The performance curves show pump performance at actual speed cf. standard motor range.

The speed of the motors is approximate:

4" and 6" motors: $n=2870 \text{ min}^{-1}$

8" to 12" motors: $n=2900 \text{ min}^{-1}$

The measurements were made with airless water at a temperature of 30°C.

The colored section of the table indicates the recommended performance range.

The performance curves are inclusive of possible losses $\pm 5\%$.

Rewindable motor

Single-phase: 220 - 240V/50Hz

Three-phase: 380 - 415V/50Hz

Equip with start control box or digital auto-control box Pumps are designed by casing stressed

NEMA dimension standards.

General Information

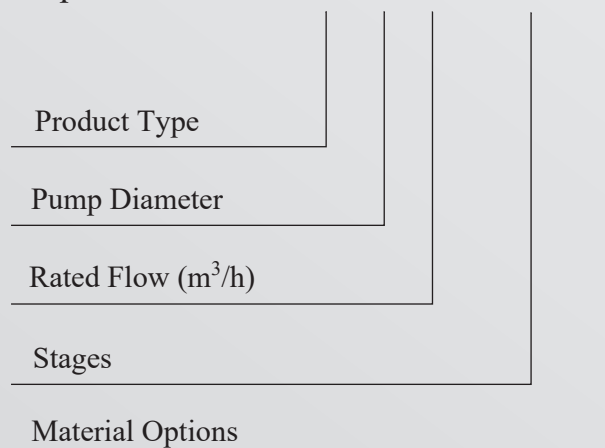
TYPE KEY



MODEL	SEP 8160 / 03 K		
H - M	96 - 67		
Q - m³/h	140 - 220		
HP	75	KW	55
Frequency	60 Hz		
Speed	3460 rpm		
S.N.	20XXXXXX-56XXX		

**STAINLESS STEEL SUBMERSIBLE PUMP
MADE IN EGYPT CE**

Example ——— SEP 8-160 / 03 - K



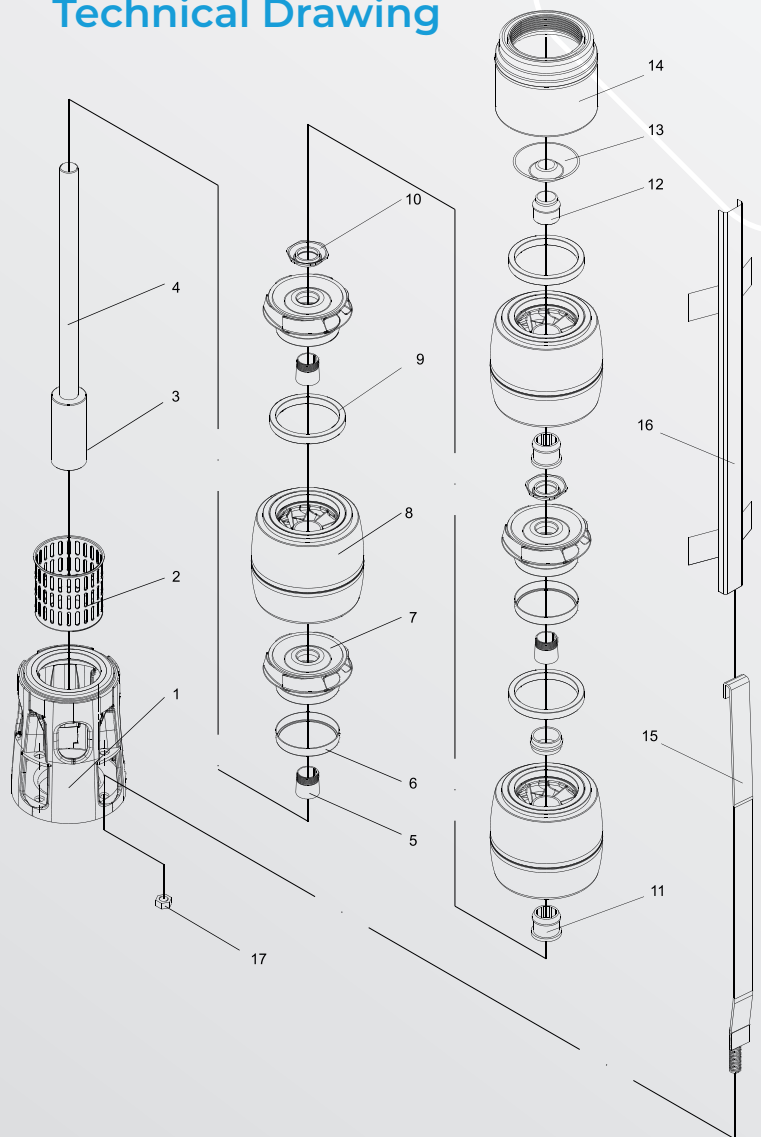
Material Data

Part List

N°	Part Name	Material
1	Suction Stage	Stainless Steel (AISI 304L)
2	Filter	Stainless Steel (AISI 304L)
3	Coupling	Stainless Steel (AISI 304L)
4	Pump Shaft	Stainless Steel (AISI 420 - 304L)
5	Impeller Lock	Stainless Steel (AISI 304L)
6	Impeller Rings	Stainless Steel (AISI 304L)
7	Impeller	Stainless Steel (AISI 304L)
8	Diffuser	Stainless Steel (AISI 304L)
9	Diffuser Ring	Rubber

N°	Part Name	Material
10	Nut For Impeller Lock	Stainless Steel (AISI 304L)
11	Shaft Bearing	Rubber
12	Shaft Stopper	Stainless Steel (AISI 304L)
13	Valve	Stainless Steel (AISI 304L)
14	Outlet	Stainless Steel (AISI 304L)
15	Strap	Stainless Steel (AISI 304L)
16	Cable Guard	Stainless Steel (AISI 304L)
17	Strap Nut	Stainless Steel (AISI 304L)

Technical Drawing



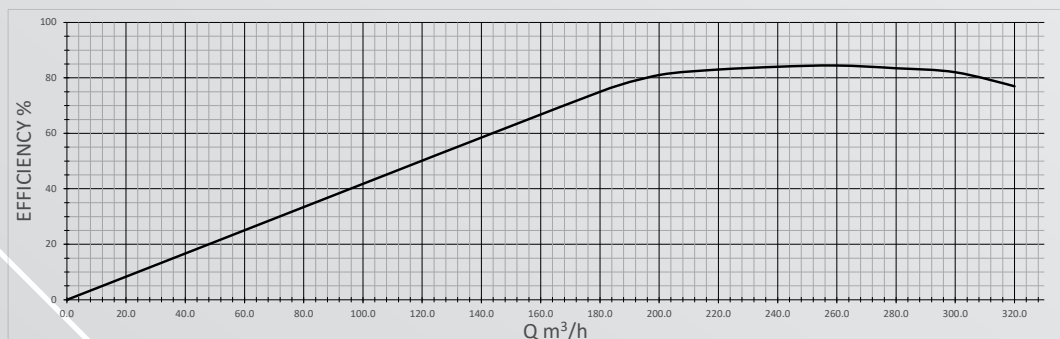
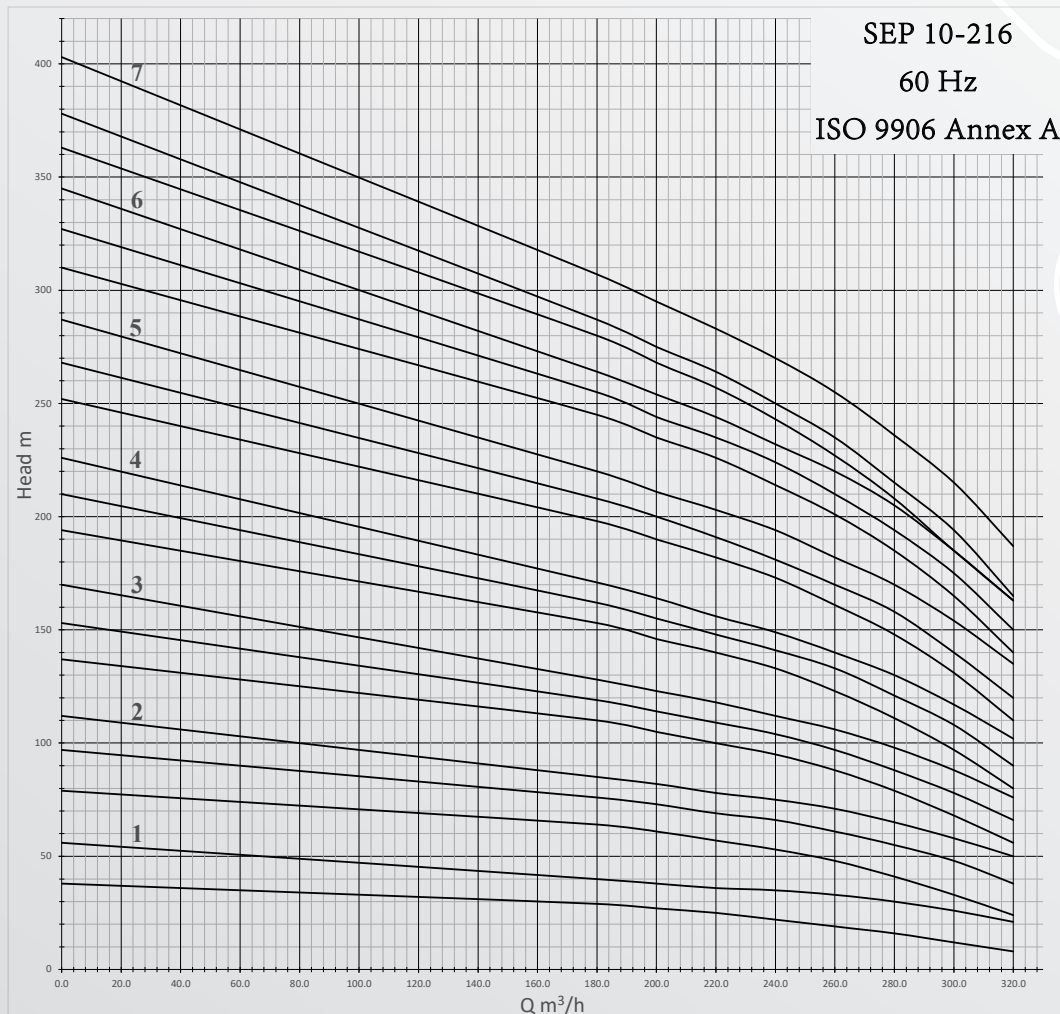
SEP 10” Pump Series



STAINLESS STEEL SUBMERSIBLE SEP 10-216 SERIES

Stainless Steel Submersible Pumps / SEP 10-216 Series														60 Hz	
Pump Type	power		Flow										Pump Weight	Pump length	Outlet
	Kw	Hp	m ³ /h	0.0	180.0	200.0	220.0	240.0	260.0	280.0	300.0	320.0	Kg	cm	Inch
			l/s	0.00	50.00	55.56	61.11	66.67	72.22	77.78	83.33	88.89			
SEP 10-216/ 01/K	22	30	Head m	38	29	27	25	22	19	16	12	8	28	71	6"
SEP 10-216/ 01	30	40		56	40	38	36	35	33	30	26	21	28	71	
SEP 10-216/ 02/KK	45	60		79	64	61	57	53	48	41	33	24	40	88	
SEP 10-216/ 02/K	55	75		97	76	73	69	66	61	55	48	38	40	88	
SEP 10-216/ 02	63	85		112	85	82	78	75	71	65	58	50	40	88	
SEP 10-216/ 03/KK	75	100		137	110	105	100	95	88	79	68	56	51	106	
SEP 10-216/ 03/K	92	125		153	119	114	109	104	97	88	78	66	51	106	
SEP 10-216/ 03	92	125		170	128	123	118	112	106	98	88	76	51	106	
SEP 10-216/ 04/KK	110	150		194	153	146	140	133	123	111	97	80	63	123	
SEP 10-216/ 04/K	110	150		210	162	155	148	141	133	121	108	90	63	123	
SEP 10-216/ 04	110	150		226	171	164	156	149	140	130	117	102	63	123	
SEP 10-216/ 05/KK	132	175		252	198	190	182	173	161	148	131	110	75	141	
SEP 10-216/ 05/K	132	175		268	208	200	191	181	170	158	140	120	75	141	
SEP 10-216/ 05	147	200		287	220	211	203	194	182	170	154	135	75	141	
SEP 10-216/ 06/KK	170	230		310	245	235	226	214	201	185	165	140	87	158	
SEP 10-216/ 06/K	170	230		327	255	244	235	224	210	194	175	150	87	158	
SEP 10-216/ 06	170	230		345	264	254	244	232	220	205	185	163	87	158	
SEP 10-216/ 07/KK	185	250		363	280	268	257	243	227	208	185	163	99	176	
SEP 10-216/ 07/K	185	250		378	287	275	264	250	235	215	194	165	99	176	
SEP 10-216/ 07	220	300		403	307	295	283	270	255	236	215	187	99	176	

STAINLESS STEEL SUBMERSIBLE SEP 10-216 SERIES



Head losses in plastic pipes

Upper figures indicate the velocity of water in m/sec.

Lower figures indicate head loss in metres per 100 metres of straight pipes.

Quantity of water			PELM/PEH PN 10											
m ³ /h	Litres/min.	Litres/sec.	PELM					PEH						
			25	32	40	50	63	75	90	110	125	140	160	180
			20.4	26.2	32.6	40.8	51.4	61.4	73.6	90.0	102.2	114.6	130.8	147.2
0.6	10	0.16	0.49 1.8	0.30 0.66	0.19 0.27	0.12 0.085								
0.9	15	0.25	0.76 4.0	0.46 1.14	0.3 0.6	0.19 0.18	0.12 0.63							
1.2	20	0.33	1.0 6.4	0.61 2.2	0.39 0.9	0.25 0.28	0.16 0.11							
1.5	25	0.42	1.3 10.0	0.78 3.5	0.5 1.4	0.32 0.43	0.2 0.17	0.14 0.074						
1.8	30	0.50	1.53 13.0	0.93 4.6	0.6 1.9	0.38 0.57	0.24 0.22	0.17 0.092						
2.1	35	0.58	1.77 16.0	1.08 6.0	0.69 2.0	0.44 0.70	0.28 0.27	0.2 0.12						
2.4	40	0.67	2.05 22.0	1.24 7.5	0.80 3.3	0.51 0.93	0.32 0.35	0.23 0.16	0.16 0.063					
3.0	50	0.83	2.54 37.0	1.54 11.0	0.99 4.8	0.63 1.40	0.4 0.50	0.28 0.22	0.2 0.09					
3.6	60	1.00	3.06 43.0	1.85 15.0	1.2 6.5	0.76 1.90	0.48 0.70	0.34 0.32	0.24 0.13	0.16 0.050				
4.2	70	1.12	3.43 50.0	2.08 18.0	1.34 8.0	0.86 2.50	0.54 0.83	0.38 0.38	0.26 0.17	0.18 0.068				
4.8	80	1.33	2.47 25.0	1.59 10.5	1.02 3.00	0.64 1.20	0.45 0.50	0.31 0.22	0.2 0.084					
5.4	90	1.50	2.78 30.0	1.8 12.0	1.15 3.50	0.72 1.30	0.51 0.57	0.35 0.26	0.24 0.092	0.18 0.05				
6.0	100	1.67	3.1 39.0	2.0 16.0	1.28 4.6	0.8 1.80	0.56 0.73	0.39 0.30	0.26 0.12	0.2 0.07				
7.5	125	2.08	3.86 50.0	2.49 24.0	1.59 6.6	1.00 2.50	0.70 1.10	0.49 0.50	0.33 0.18	0.25 0.10	0.20 0.055			
9.0	150	2.50	3.00 33.0	1.91 8.6	1.20 3.5	0.84 1.40	0.59 0.63	0.39 0.24	0.30 0.13	0.24 0.13	0.2 0.075			
10.5	175	2.92	3.5 38.0	2.23 11.0	1.41 4.3	0.99 1.80	0.69 0.78	0.46 0.30	0.36 0.18	0.28 0.09				
12	200	3.33	3.99 50.0	2.55 14.0	1.60 5.5	1.12 2.40	0.78 1.0	0.52 0.40	0.41 0.22	0.32 0.12	0.25 0.065	0.2		
15	250	4.17	3.19 21.0	2.01 8.0	1.41 3.70	1.41 2.10	0.98 1.50	0.66 0.57	0.51 0.34	0.40 0.18	0.31 0.105	0.24 0.06	0.25	0.06
18	300	5.00	3.82 28.0	2.41 10.5	1.69 4.60	1.18 2.10	1.18 1.95	0.78 0.77	0.61 0.45	0.48 0.25	0.37 0.13	0.29 0.085	0.06	0.085
24	400	6.67	4.82 37.0	3.38 15.0	2.35 6.6	1.57 2.60	1.57 2.60	1.05 1.40	0.81 0.78	0.65 0.44	0.50 0.23	0.39 0.15	0.39	0.15
30	500	8.33	4.01 28.0	2.81 11.5	1.96 5.0	1.31 2.0	1.31 2.0	1.02 1.20	0.81 0.63	0.62 0.33	0.49 0.21	0.49	0.21	0.21
36	600	10.0	4.82 37.0	3.38 15.0	2.35 6.6	1.57 2.60	1.57 2.60	1.05 1.40	0.81 0.78	0.65 0.44	0.50 0.23	0.39 0.15	0.39	0.15
42	700	11.7	5.64 47.0	3.95 24.0	2.75 8.0	1.84 3.50	1.84 3.50	1.43 1.90	1.13 1.10	0.87 0.60	0.69 0.40	0.69	0.40	0.40
48	800	13.3	4.49 26.0	3.13 11.0	2.09 4.5	1.62 2.60	1.62 2.60	1.29 1.40	0.99 0.81	0.78 0.48	0.78	0.48	0.48	0.48
54	900	15.0	5.07 33.0	3.53 13.5	2.36 5.5	1.83 3.20	1.83 3.20	1.45 1.70	1.12 0.95	1.12 0.58	0.08	0.58	0.58	0.58
60	1000	16.7	5.64 40.0	3.93 16.0	2.63 6.7	2.04 3.90	2.04 3.90	1.62 2.2	1.24 1.2	0.96 0.75	0.96	0.75	0.75	0.75
75	1250	20.8	4.89 25.0	3.27 9.0	2.54 5.0	2.02 3.0	2.02 3.0	1.55 1.6	1.22 0.95	1.22	0.95	0.95	0.95	0.95
90	1500	25.0	5.88 33.0	3.93 13.0	3.05 8.0	2.42 4.1	2.42 4.1	1.86 2.3	1.47 1.40	1.47	1.40	1.40	1.40	1.40
105	1750	29.2	6.86 44.0	4.59 17.5	3.56 9.7	2.83 5.7	2.83 5.7	2.17 3.2	1.72 1.9	1.72	1.9	1.9	1.9	1.9
120	2000	33.3	5.23 23.0	4.06 13.0	3.23 7.0	2.48 4.0	2.48 4.0	1.96 2.4	1.96	2.4	2.4	2.4	2.4	2.4
150	2500	41.7	6.55 34.0	5.08 18.0	4.04 10.5	3.10 6.0	3.10 6.0	2.45 3.5	2.45	3.5	3.5	3.5	3.5	3.5
180	3000	50.0	7.86 45.0	6.1 27.0	4.85 14.0	3.72 7.6	3.72 7.6	2.94 4.4	2.94	4.4	4.4	4.4	4.4	4.4
240	4000	66.7	8.13 43.0	6.47 24.0	4.96 13.0	3.92 7.5	3.92 7.5	3.10 4.89	3.10	4.89	4.89	4.89	4.89	4.89
300	5000	83.3	33.0 18.0	8.08 18.0	6.2 11.0	4.89 11.0	4.89 11.0	3.92 5.8	3.92	5.8	5.8	5.8	5.8	5.8

The table is based on a nomogram.

Roughness: K = 0.01 mm.

Water temperature: t = 10 °C.

CABLE SELECTION TABLE

Maximum Lengths in Meters (m) for 400V/50Hz, 5% Voltage Drop, 30°C Ambient Temperature IEC Publication 364-5-523 (1983) Table 52-B1																	
DIRECT ON LINE (DOL)																	
Motor Power		Cable Size mm ² , Copper Wire, Rated Insulation at 70°C															
KW	HP	2,5	4	6	10	16	25	35	50	70	95	120	150	185	240	300	400
4	5,5	180	290	430	710												
5,5	7,5	130	210	320	530	830											
7,5	10	90	150	230	390	610	940										
9,3	12,5	80	130	190	320	510	770										
11	15	60	100	160	270	430	650	890									
13	17,5		90	140	230	370	560	770									
15	20		80	120	200	320	490	680	920								
18,5	25			100	160	260	400	540	740	980							
22	30				140	220	340	470	630	840							
26	35				120	190	290	390	540	720	920						
30	40					160	250	340	470	620	790	940					
37	50					130*	200	280	380	500	640	760	890	1020			
45	60						170	240	330	440	570	690	810	940			
52	70						150*	210	290	390	500	600	710	820	980		
55	75						140*	190	270	360	470	560	660	770	910		
60	80							180	250	340	440	530	630	730	870	1010	
67	90							160*	220	300	390	460	550	630	750	860	1000
75	100								200*	270	350	420	490	570	680	780	910
83	111								180*	250	320	390	450	530	630	730	850
85	114									230	290	350	410	480	570	650	750
93	125									220*	280	340	390	460	550	620	720
110	150										220	270	310	360	420	480	550
130	175										200*	240	280	330	390	440	520
150	200											200*	240	280	330	380	440
185	250												210*	250	280	330	390
STAR - DELTA (YΔ)																	
Motor Power		Cable Size mm ² , Copper Wire, Rated Insulation at 70°C															
KW	HP	2,5	4	6	10	16	25	35	50	70	95	120	150	185	240	300	400
4	5,5	270	430	640													
5,5	7,5	190	310	480	790												
7,5	10	130	220	340	580	910											
9,3	12,5	120	190	280	480	760											
11	15	90	150	240	400	640	970										
13	17,5	70	130	210	340	550	840										
15	20	70	120	180	300	480	730	1020									
18,5	25	60	90	150	240	390	600	810									
22	30		70	120	210	330	510	700	940								
26	35		60*	100	180	280	430	580	810								
30	40			90	150	240	370	510	700	930							
37	50				120	190	300	420	570	750	960						
45	60				100	160	250	360	490	660	850						
52	70				90*	150	220	310	430	580	750	900					
55	75					130	210	280	400	540	700	840	990				
60	80					120	190	270	370	510	660	790	940				
67	90					100	180	240	330	450	580	690	820	940			
75	100					90*	150	210	300	400	520	630	730	850	1020		
83	111						130	190	270	370	480	580	670	790	940		
85	114						130*	180	250	340	430	520	610	720	850	970	
93	125						120*	160	240	330	420	510	580	690	820	930	
110	150							130*	190	250	330	400	460	540	630	720	820
130	175								160*	220	300	360	420	490	580	660	780
150	200								150*	190	250	300	360	420	490	570	660
185	250										190*	240	270	310	370	420	490

* For Individual Contactor



SUBMERSIBLE PUMPS & MOTORS

SUTEKSAN EGYPT PUMPS



**EGYPT - CAIRO - 10TH OF RAMADAN CITY
B135-A5 THIRD INDUSTRIAL ZONE
POSTCODE: 44629**



WWW.SUTEKSANEGYPT.COM



**CEO.SUTEKSANEGYPT@GMAIL.COM
SALESDEP.SUTEKSANEGYPT@GMAIL.COM**



**01050500960 - 01033005736
01050500961 - 01050500962**



0554413099 - 0554413080

